



DISCOVER THE MANY GIFTS OF NATURE

REDISCOVER THE JOY OF LIVING BY THE RIVER

RIVERSIDE
TALOJA



Artist's Impression



LIFE BY THE RIVER

THE SECRET TO STAYING HEALTHY FOREVER

Nature is the best healer. Spending some quiet time in the company of the great outdoors, parks, mountains or rivers can have a calming effect on our mind. The sights, smells and sounds of nature are known to bestow amazing health benefits and enhance overall well-being of those living around.

Experience the bliss of a serene life at Riverside in Talaja. A world that promises you a healthier future.



ABOUT TALOJA

One of the fastest growing nodes of Navi Mumbai, Talaja offers a perfect blend of residential and commercial spaces, rich cultural heritage, natural habitat with hills and abundant green cover.

This prominent Industrial hub houses many large, medium and small industrial units. Meticulously planned by CIDCO, Talaja is a sought-after location that combines well-planned infrastructure with good connectivity.

Located on the National Highway IV, it connects Mumbai and Pune (via Thane) without hassles. Talaja station falls in the Vasai-Diva-Panvel Central Railway corridor, giving its commuters a distinct advantage.

Talaja is growing in prominence as a self-sustaining residential destination, complete with social amenities such as schools, healthcare facilities, commercial centres, and entertainment and leisure outlets.



ENJOY A LIFETIME OF TRANQUILITY WITH THE BEST OF CONNECTIVITY

Riverside, Taloja enjoys a distinct advantage of being away from the chaos of urban jungle and yet closest to Kharghar – Navi Mumbai's fastest developing node. With well-planned civic amenities and a slew of infrastructure projects in the pipeline, Riverside is all set to enjoy excellent connectivity and hassle-free travel across the city.

UPCOMING INFRASTRUCTURE PROJECTS



Navi Mumbai
Metro Line 1



Taloja to
Kharghar Flyover



Mumbai Trans Harbour Link
(MTHL)



Navi Mumbai
International Airport



Kharghar BKC 2



Reference Image



COMMUTE

- Pendhar Metro Station - 1.2 Km
- Central Park Metro Station - 4.7 Km
- Kharghar Railway Station - 11 Km
- Mansarovar Railway Station - 13 Km
- Khandeshwar Railway Station - 12 Km



Reference Image



HEALTHCARE

- Rana NX Hospital - 2 Km
- Sri Sathya Sai Sanjeevani Hospital - 2 Km
- Actrec Tata Memorial Centre - 6.7 Km
- M.G.M. Hospital Kalamboli - 8.8 Km
- Medicity Hospital Kharghar - 9.5 Km



PARK

- AK Plaza - 1 Km
- CIDCO Garden Taloja Phase - 1.9 Km
- Central Park, Near CIDCO - 4.5 Km



Reference Image



SHOPPING

- D-Mart Kharghar - 8 Km
- D-Mart Kalamboli - 7.6 Km
- Little World Mall - 11.3 Km
- Orion Mall (Panvel) - 13.8 Km



Reference Image



Artist's Impression



DESIGNED BY GLOBAL MINDS, KEEPING NATURE IN MIND

Riverside stands apart as a pristine residential address, towering against the lush green backdrop of Taloja river. The magnificent structure captures attention with its captivating design and a verdant landscape, crafted meticulously and thoughtfully by international architectural masterminds.

From its conception to completion, the vision was to preserve the natural beauty of the surroundings and enhance it further. The project has retained maximum Green cover and planned for beautification of the adjoining areas.

Striking features:

- 13-Storey Tower with spacious 1 & 2 BHK homes
- Landscape designed by Singapore based International consultant
- Maximum Green cover and close to Taloja River



Artist's Impression



Reference Image



WELCOME TO A GREENER WORLD

BUSTLING WITH ENERGY

Be it entertaining your friends, recreation, fitness or just spending time with your kids in the pristine outdoors. Riverside offers you a plethora of amenities to connect with nature while enjoying your favourite activities.

Wellness and Sports amenities



Football



Basketball



Box Cricket



Swimming & Kids' Pool



Jogging / Walking Track



Landscape Garden



Trampoline



Yoga Deck



Reference Image



Reference Image



Reference Image



Reference Image



Artist's Impression



THRIVE IN A VIBRANT LANDSCAPE, PERFECT FOR THE OLD AND YOUNG

Welcome to spaces that have been smartly segregated to create social bonds and infuse joy into everyday living. So that your loved ones can truly be on their own while feeling at home.



- Entrance lobby
- Generator Backup for lift & Common areas
- Water softener/ RO Plant



- Senior Citizen Area
- Cycle Track
- Acupressure Path



- Library lounge sitting
- Wi Fi zone
- Barbecue area with lawn
- Theme lighting

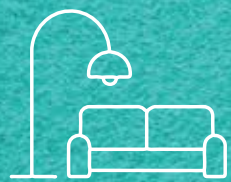


- Butterfly Garden
- Landscape Garden



Living Room

Artist's Impression



IMMERSE YOURSELF IN A COZY AND COMFORTABLE

LIVING EXPERIENCE

Riverside offers thoughtfully designed spaces, integrated with high quality fittings and fixtures to enhance your living experience and assure safety of your loved ones everyday, all round the year.

Premium Interiors

- Granite kitchen platform
- Branded CP, vitrified tiles and sanitary fixtures - Jaquar or equivalent
- Powder coated Aluminum window
- Matt Vitrified tiles in kitchen and bathroom
- Designer glazed ceramic tiles dado in kitchen and bathrooms
- Ample natural light and ventilation

Feel safe and secured round the clock

- CCTV surveillance with night vision cameras



Artist's Impression

Second Bedroom



Reference Image

Kitchen



Master Bedroom

Artist's Impression

PLANNED TO MAKE YOUR EVERY DAY BIG, BEAUTIFUL AND BLISSFUL

The magnificence of Riverside is reflected throughout its with well-planned layouts that strike a perfect balance between residential, recreational and utility spaces.



LEGEND

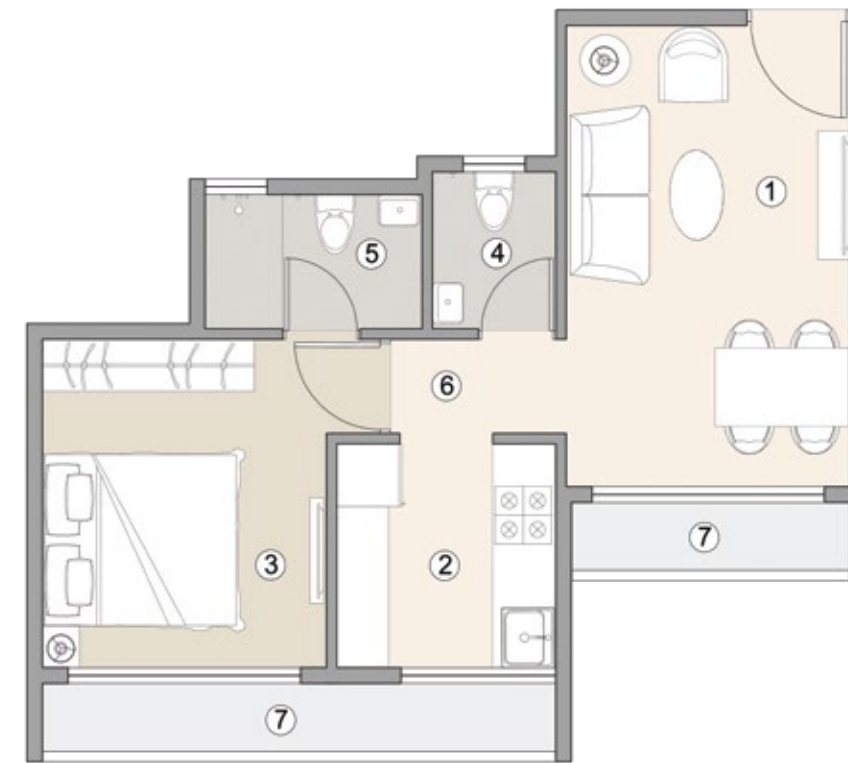
- | | | |
|-------------------------|----------------------------|---------------------------|
| 01 Entry | 07 Barbeque Area | 13 Cycle Track |
| 02 Swimming Pool | 08 Entrance of Club | 14 Entrance to Waterfront |
| 03 Pool Deck 3 M Wide | 09 Pool Deck | 15 Senior Citizen Area |
| 04 RAMP | 10 Kids' Play Area | 16 Acupressure Path |
| 05 Changing Room/Toilet | 11 Banquet Area | 17 Potted Plants |
| 06 Lawn For Function | 12 Jogging / Walking Track | 18 Stilt Multipurpose |

UNIT PLANS

1 BHK

LEGEND

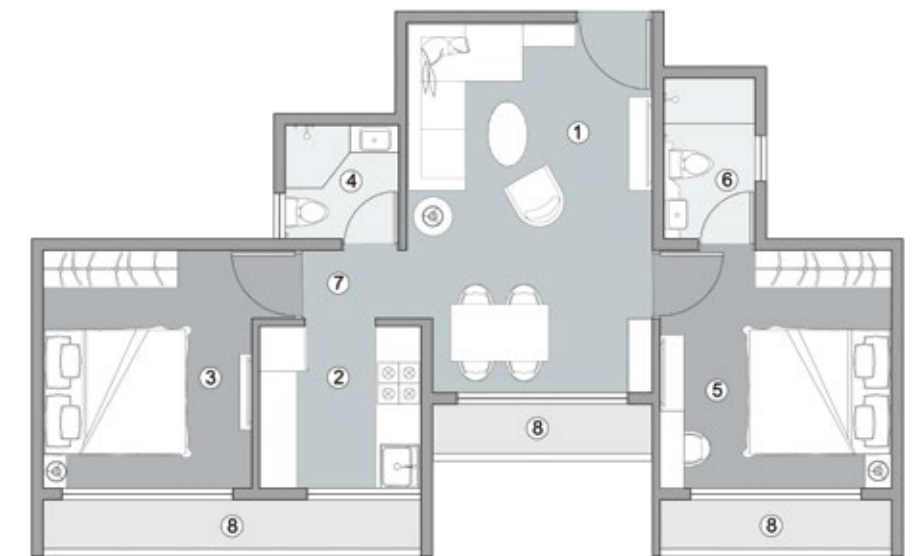
- 1 Living&Dining
2.75 x 4.41M / 9' x 14'6"
- 2 Kitchen
2.12 x 2.14M / 7' x 7'
- 3 Bedroom
2.75 x 3.14M / 9' x 10'4"
- 4 Toilet (01)
1.2 x 1.5M / 3'11" x 4'11"
- 5 Toilet (02)
1.28 x 2.10M / 4'3" x 6'11"
- 6 Passage
1.67 x 0.9M / 5'6" x 2'11"
- 7 0.75M Wide Chhajja



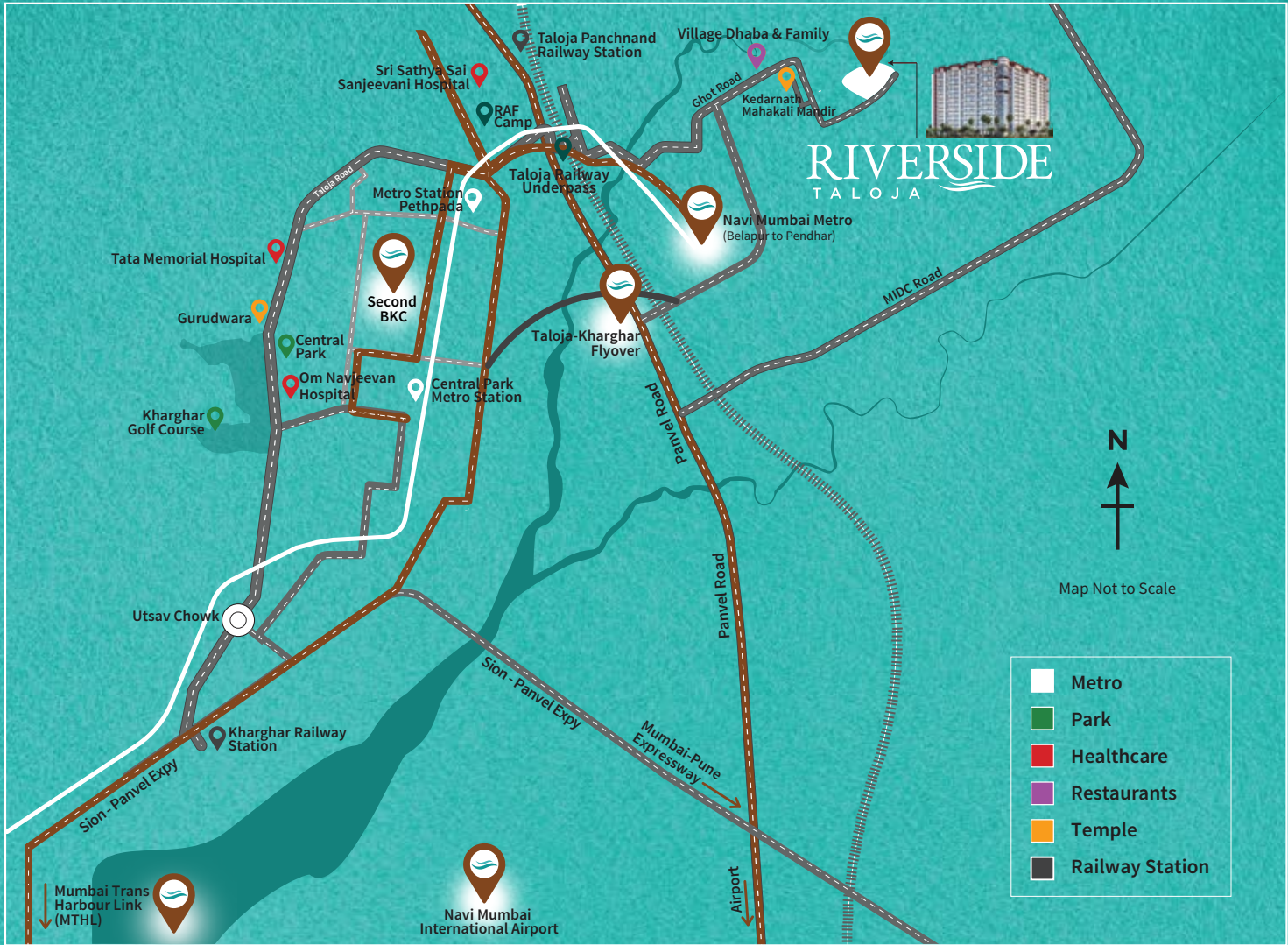
2 BHK

LEGEND

- 1 Living&Dining
3.24 x 4.88M / 10'7" x 16'
- 2 Kitchen
2.13 x 2.14M / 7' x 7'
- 3 Bedroom (02)
2.75 x 3.14M / 9' x 10'4"
- 4 Toilet (01)
1.5 x 1.5M / 5' x 5'
- 5 Master Bedroom
3.05 x 3.14M / 10' x 10.4'
- 6 Toilet (02)
1.2 x 2.12M / 3'11" x 7'
- 7 Passage
1.38 x 0.9M / 4'6" x 2'11"
- 8 0.75M Wide Chhajja



LOCATION MAP



ABOUT DEVELOPERS



Luv Homes brand is the vision of an eclectic group of passionately driven realty professionals and industry leaders with proven business acumen.

The brand is led by first-generation entrepreneurs & real estate professionals, who have carved a niche for themselves in the manufacturing industry, enjoying an impeccable entrepreneurship record spanning four decades and professional entrepreneurs who have successfully handled the delivery of more than 10,000 homes across Mumbai, Bengaluru, Pune, Dubai and Chennai markets.

Luv Homes future plans envisage delivering milestone residential projects in affordable ticket sizes without compromising on the luxury quotient spanning the Navi Mumbai markets; especially in the Talaja micro-market



Anant Builders is a well-established and reputable construction company based in Navi Mumbai that specializes in developing budget homes. We understand the importance of affordable housing and strive to make homeownership a reality for everyone. Anant Builders are known for its commitment to quality, customer satisfaction, use of latest technology and techniques, focus on innovation and sustainability.

With many more projects in pipeline, we look beyond our strength, ability and potential to deliver more than expected.

www.riversidetaloja.com

MahaRERA Registration No: P52000045602.

MahaRERA. Website: <https://maharera.mahaonline.gov.in>.

Corporate Address: Office No. 2&3, Silver Crest, Geometrix, Plot No. 29, Sector - 25, Kamothe, Navi Mumbai 410 209.

Site Address : Riverside Sales Office, Survey No. 43/1/5 at Koyana Velhe, Panvel, Raigarh, 410 208.

Disclaimer: All art renderings, illustrations, photographs and pictures contained in this advertisement are an artist's impression only and the same should not be construed to be the final image / view of the final project. Since the project is under evolution there is a possibility that there may be certain changes in the project as represented in this advertisement. Every interested purchaser should take note of this express representation. kindly visit our website for the complete disclaimer. *T&C Apply.

